

## Course Fees

Students*	300 €
University Employees	400 €
Others	500 €

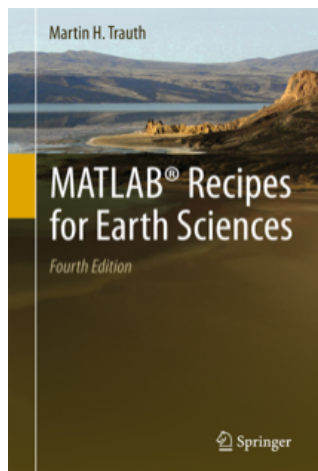
\* including doctoral students. Employees and students of the University of Potsdam are exempted from the fee.

## The book

The course fees includes a copy of the textbook

*Trauth MH (2015) MATLAB Recipes for Earth Sciences - 4rd Edition Springer, 427 p., ISBN: 978-3-662-46244-7*

including all course materials, example data, and MATLAB recipes.



## Organizer

### UP Transfer GmbH at the University of Potsdam

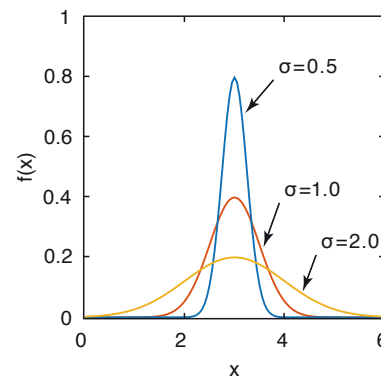
Brunhilde Schulz  
Karl-Liebknecht-Straße 24-25, Haus 29  
D-14476 Potsdam-Golm  
Telephone (0331) 977-1117  
Fax (0331) 977-3870  
E-mail [brunhilde.schulz@up-transfer.de](mailto:brunhilde.schulz@up-transfer.de)

URL <http://www.up-transfer.de>

### University of Potsdam Institute of Earth and Environmental Sciences

apl. Prof. Dr. Martin H. Trauth  
Karl-Liebknecht-Str. 24-25, Haus 27  
D-14476 Potsdam-Golm  
Telephone (0331) 977-5810  
Fax (0331) 977-5700  
E-mail [trauth@geo.uni-potsdam.de](mailto:trauth@geo.uni-potsdam.de)

URL <http://martin-trauth.de>



Probability density function  $f(x)$  of a logarithmic normal distribution with a mean  $\mu=0$  and with various values for the standard deviation  $\sigma$ .

44th Shortcourse on

# MATLAB® Recipes for Earth Sciences

19–23 February 2018  
Potsdam

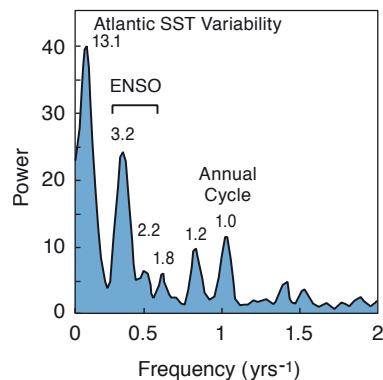
Martin H. Trauth

## Content

The course introduces methods of data analysis in earth and environmental sciences using MATLAB, one of the leading software packages for the solution of mathematical problems. The content of the course includes basic statistics for univariate, bivariate and multivariate datasets, time-series analysis and signal processing, processing and displaying digital elevation models, gridding and contouring, and image processing and analysis.

## References

The course was taught at the U Aberystwyth, U Addis Ababa, U Bremen, U Bratislava, U Ghent, UA Barcelona, BGR Hannover, U Kiel, UC London, LMU München, BGI Bayreuth, U Nairobi, U Köln, U Stockholm, U Amsterdam, NHM Vienna, GNS Science Wellington, Brown U Providence, U Arizona Tucson and U Potsdam.



Power spectrum of a red-color intensity transect across 70 varves dominated by significant peaks at frequencies of ca. 0.076, 0.313, 0.455 and 1.0 yrs<sup>-1</sup>, suggesting a strong influence of the tropical Atlantic sea-surface temperature (SST) variability, the El Niño/Southern Oscillation (ENSO), and the annual cycle that occurred 30 kyrs ago, similar to today's cyclicities.

## Course Program

### Monday

Data analysis in earth and environmental sciences, types of data, overview of methods, introduction to the MATLAB programming environment. MATLAB syntax, import and export of data, types of data, scripts and functions, basic visualization techniques.

### Tuesday

Univariate statistics, theoretical distributions, hypothesis testing. Bivariate statistics, regression, bootstrap and jackknife, reduced major axis regression, nonlinear weighted regression.

### Wednesday

Time-series analysis, Blackman-Tukey spectral analysis, periodogram, evolutionary spectrum, Lomb-Scargle method, Wavelets. Signal processing, convolution and filtering, filter design, adaptive filters.

### Thursday

Analysis of spatial data, digital terrain models, spatial interpolation, visualization of spatial data. Multivariate statistics, principal component analysis, cluster analysis.

### Friday

Image processing and analysis, processing and georeferencing satellite images, image analysis of microscope images, quantification of objects in images. Creating animated eBooks and web-pages with MATLAB results. Programming of LEGO® Mindstorms EV3 robots with MATLAB.

## Course Concept

The course is being taught as lecture with demonstrations and exercises on selected examples from the earth and environmental sciences. The course location is a seminar room at the Department of Earth and Environmental Science at the University of Potsdam. The participants are expected to come with personal laptops running Windows, Linux, or Mac OS X. A temporary license of MATLAB will be provided by the organizers.

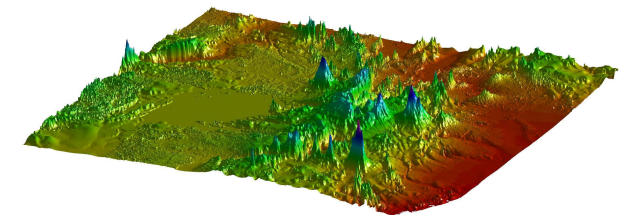
## Location

Universität Potsdam  
Standort Golm, Haus 27, Raum 1.10  
Karl-Liebknecht-Straße 24-25  
14476 Potsdam-Golm  
<http://www.geo.uni-potsdam.de>

## Registration

Register online at  
<http://www.j-work.de/up/kps44/>  
44th Course – English 19–23 February 2018

Deadline: January 15, 2018



Surface plot of the GTOPO30 elevation data using light. The plot uses Phong as the lighting type creating a combined diffuse and specular reflection on surfaces.